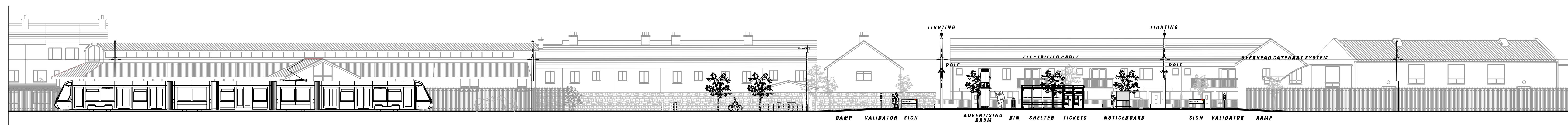
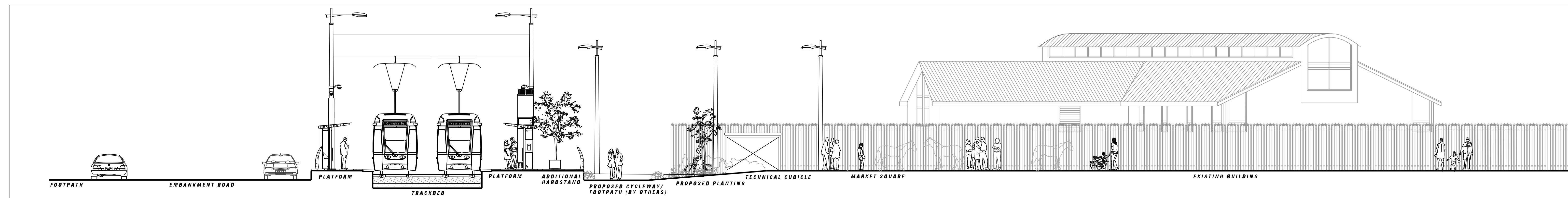


PROPOSED PLAN - SCALE 1:200



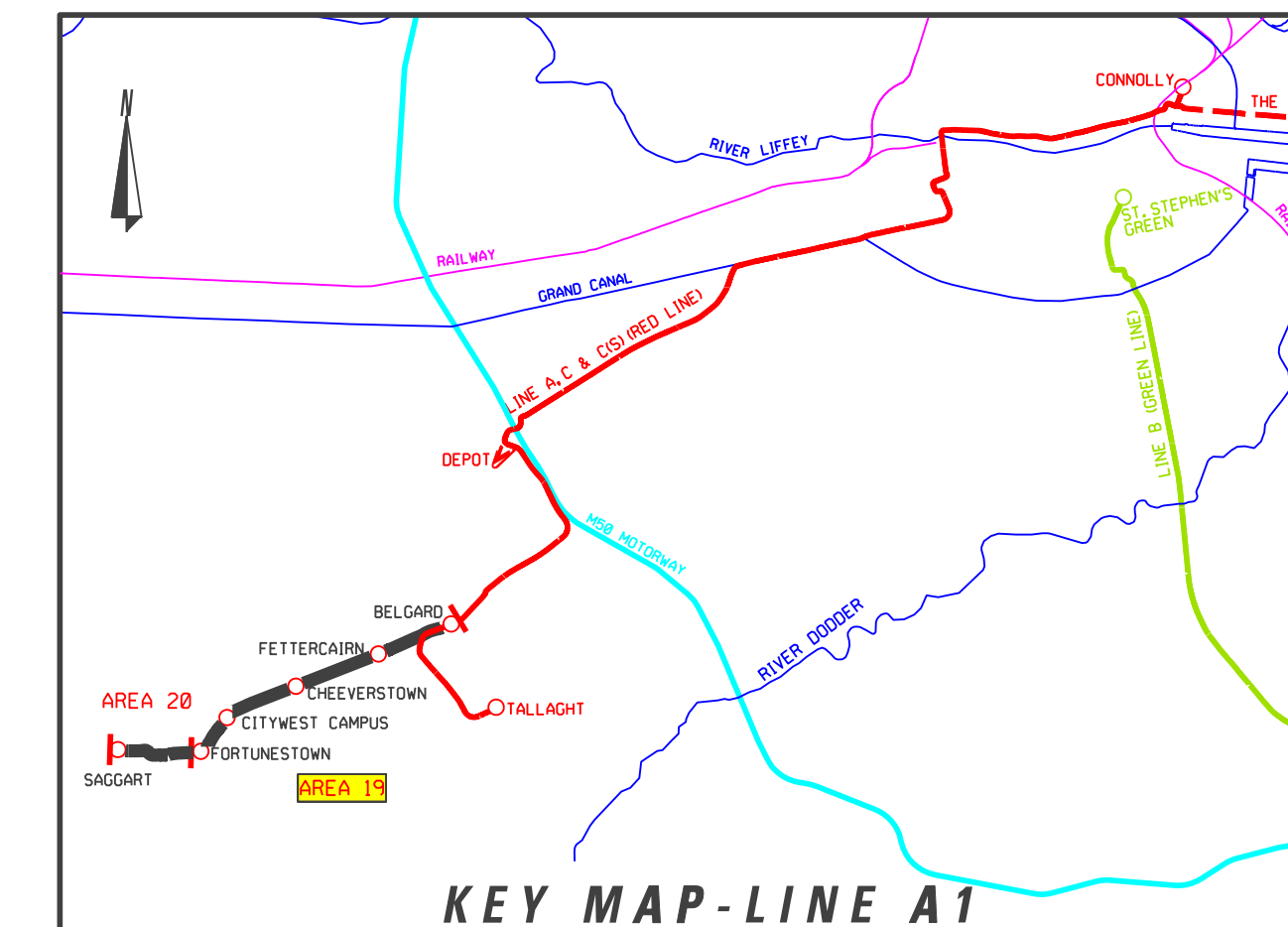
SECTIONAL ELEVATION A - A - SCALE 1:200



SECTION B - B - SCALE 1:100

**LEGEND**

- EXISTING TREE
- EXISTING TREE REMOVED
- NEW TREE
- PROPOSED EDGE PLANTING
- LOW LYING GROUND COVER
- RECONSTITUTED GRANITE SURFACE
- DETERRENT SURFACE
- HOGGIN SURFACE
- 600 x 600 PAVING SLABS
- EXISTING KERB REMOVED
- EXISTING BUILDING LINE
- STRUCTURES TO BE REMOVED
- SWEEP PATH EDGE
- POLE SUPPORT
- DIRECTION OF TRAFFIC FLOW



| REVISION | DATE | MODIFICATION | STATUS | CHECKED/APPROVED |
|----------|------|--------------|--------|------------------|
|          |      |              |        |                  |

**RPA** Railway Procurement Agency

**LUAS**

**LIGHT RAILWAY WORKS  
LINE A1 - STRUCTURES  
FETTERCAIRN STOP**

|                      |                          |
|----------------------|--------------------------|
| PREPARED: RPA OFFICE | CHECKED: DEREK TIERNEY   |
| SCALE: 1:200 1:100   | APPROVED: MICHAEL SHEEDY |
| DATE: NOVEMBER 2007  |                          |

|                    |                              |                            |
|--------------------|------------------------------|----------------------------|
| AREA NO. <b>19</b> | PLAN NO. <b>A1-ST 19 C-D</b> | SUBJECT: <b>RAIL ORDER</b> |
|--------------------|------------------------------|----------------------------|

©Copyright Railway Procurement Agency  
This drawing is confidential and the copyright is held by the RPA. This drawing must not be altered, copied or otherwise reproduced or used for any purpose without the prior permission of the RPA.  
All U.S. data used for this drawing is generated from U.S. digital data and is provided under the Database Copyright permit no. 03-0027.

| INTERNAL DOCUMENT NUMBER | STAGE | LINE | CONTRACT | ELEMENT | DRW NO. | DRW REV. |
|--------------------------|-------|------|----------|---------|---------|----------|
|                          | L     | A1   | 000      | TO      | 19002   | A        |

**NOTE:**  
FOR 1:500 PLAN DRAWING SEE RAIL ORDER  
PLAN NO. A1-RO 19 C-D (L/A1/000/CA/19004/A).